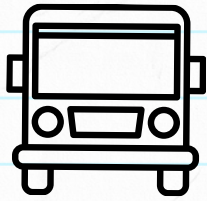


POTENTIAL INDICATORS OF HOMELESSNESS



**MISSING
THE BUS**



HUNGER



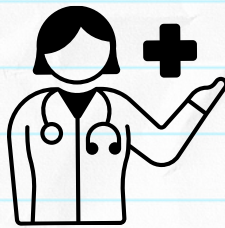
**TARDINESS
OR ABSENCES**



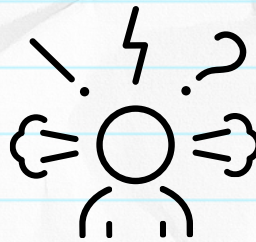
HYGIENE



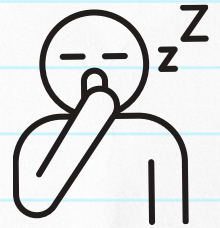
**LACK OF
PARTICIPATION/
SCHOOL SUPPLIES**



**UNMET
MEDICAL
OR DENTAL
NEEDS**



**SOCIAL AND
BEHAVIORAL
CHALLENGES**



**SLEEPING
IN CLASS/
FATIGUE**



**Scan the
code or visit
the link to
learn more!**



**ENROLLMENT AT MULTIPLE
SCHOOLS, LACK OF RECORDS,
GAPS IN LEARNING**

bit.ly/30ub5sB